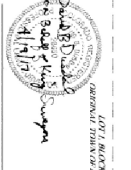
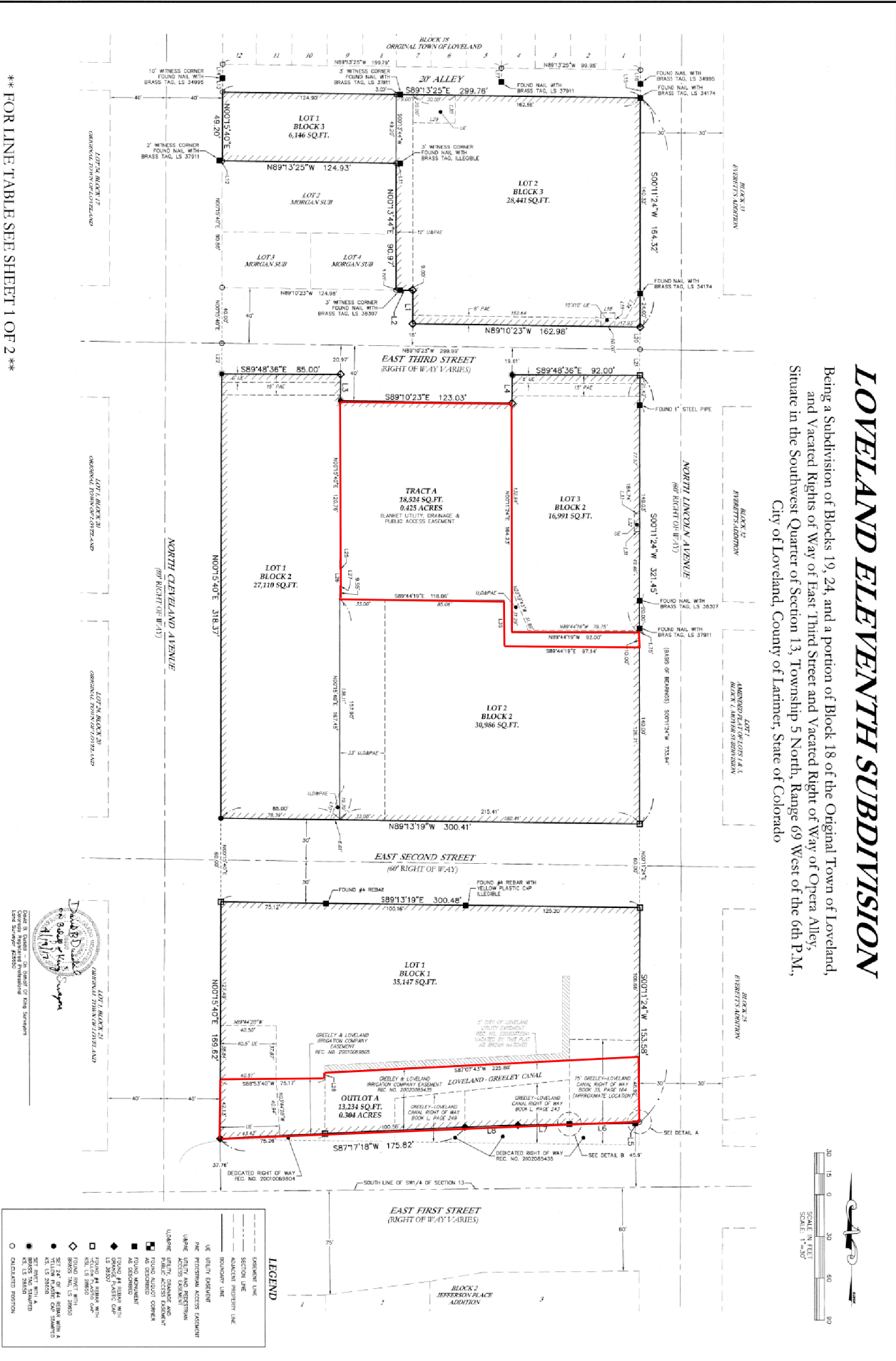




\*\* FOR LINE TABLE SHEET 1 OF 2 \*\*



**LOVELAND ELEVENTH SUBDIVISION**  
 FOR INTEREST CONSULTING GROUP  
 1218 ASH STREET, UNIT A  
 WINDSOR, CO 80550

REVISIONS:	DATE:
CITY COMMENTS & LINE WORK	CEL 2/7/17
REVISED OUTLOT & TRACK NAMES	CSK 2/23/17
REVISED LOT LINES & EASEMENTS	CSK 3/17/17
REVISED EASEMENTS	LEC 4/27/17
CADD CHECKED	LEC/CSK 4/19/17

**KING SURVEYORS**  
 650 E. Garden Drive | Windsor, Colorado 80550  
 phone: (970) 686-5011 | fax: (970) 686-5821

DATE: 4/19/17
FILE NO: 2016092301B
SCALE: 1"=30'
ISSUED BY: CSK
DRAWN BY: CSK
CHECKED BY: DBB
PROJECT # 20160923

Being a Subdivision of Blocks 19, 24, and a portion of Block 18 of the Original Town of Loveland, and Vacated Rights of Way of East Third Street and Vacated Right of Way of Opera Alley, Situate in the Southwest Quarter of Section 13, Township 5 North, Range 69 West of the 6th P.M., City of Loveland, County of Larimer, State of Colorado

**LOVELAND ELEVENTH SUBDIVISION**